

Smart Manufacturing



Ready for Industry 4.0

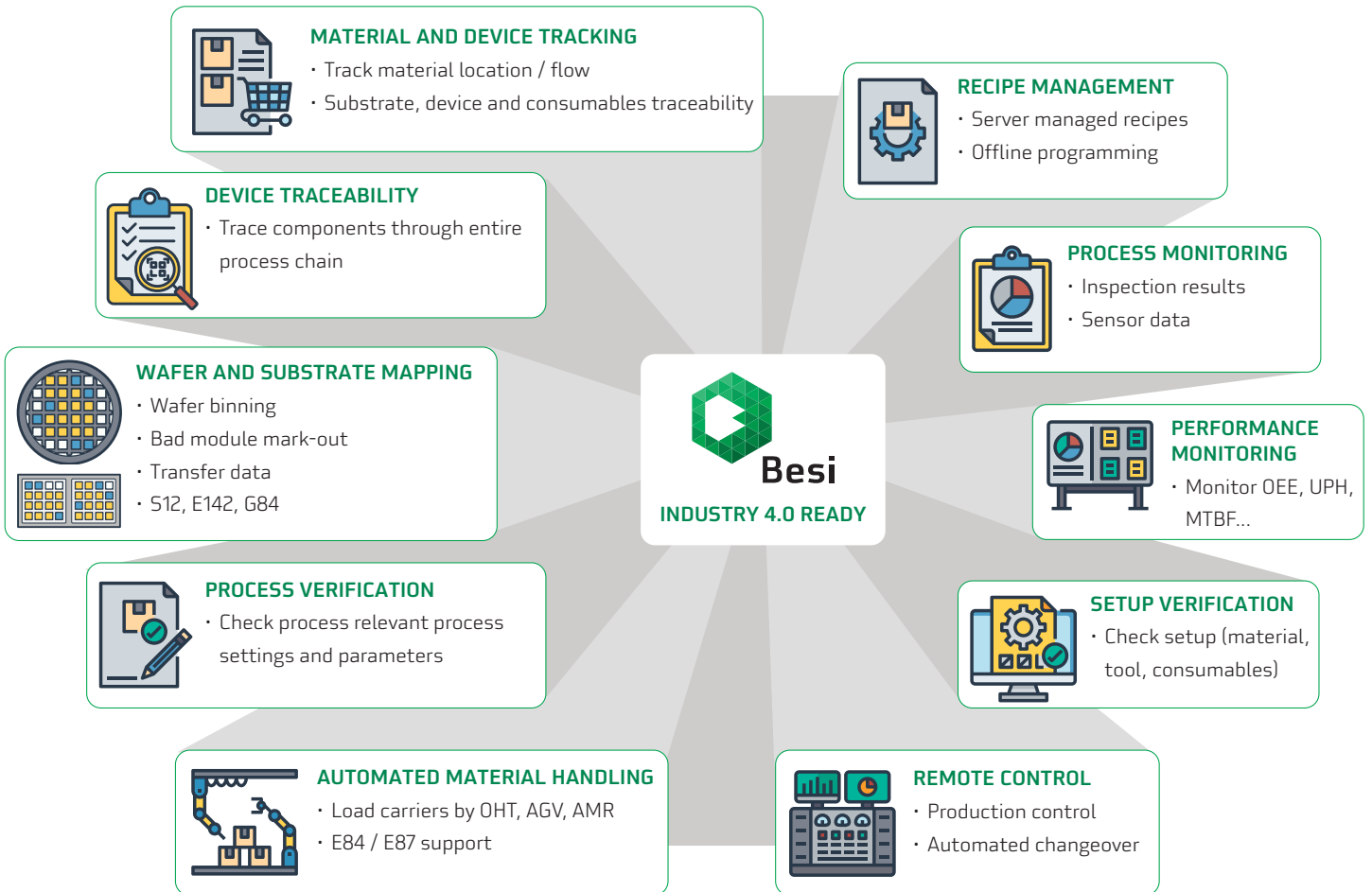
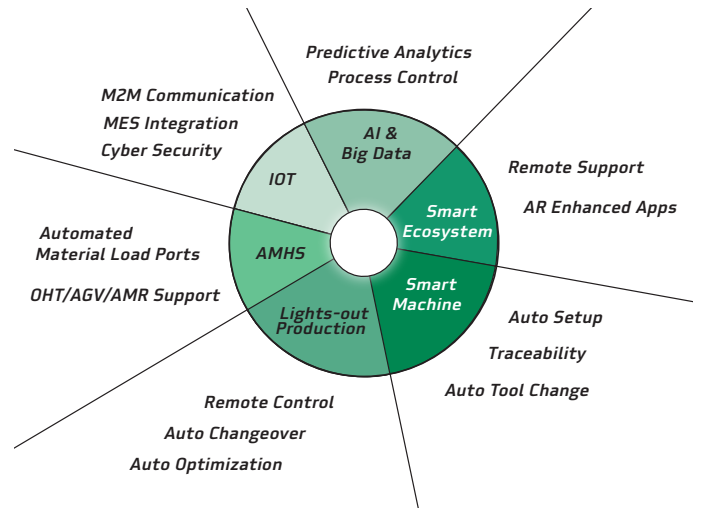
Besii focuses on the development of features to enable a rapid adaptation of Industry 4.0 requirements in semiconductor backend fabs.

Customers have the choice of using turn-key integration options and customized solutions to fulfil current and future needs in Smart Manufacturing.

The equipment core design incorporates advanced features and solutions to enable automated operation and the use of data analytics to improve manufacturing performance and monitor the production process.

Our Smart Machines can be complemented with a Smart Ecosystem to deliver value-added solutions.

Future Proof Equipment





www.besi.com - sales@besi.com



Connectivity

- SEMI SECS/GEM compliant interface
- IPC-SMEMA and IPC-HERMES M2M interface
- IP port firewall and virus scan enabled
- User access control



Smart Machine

- Product data import from CAD data
- Smart adaption to material variations
- Offline programming
- Closed-loop control system



Automated Material Handling

- Automated load ports for OHT / AGV / AMR access
- E84 handover protocol to material robots
- E87 CMS to SECS host / MES
- Automated consumables replenishment



Big Data and AI

- Big data enabled data interface
- Yield and root-cause analysis
- Performance monitoring
- Material, consumables, tools traceability



AR and Remote Support

- AR enabled applications for remote support and process visualization
- VNC remote control

SEMI SECS/GEM compliant
Supported features are product dependent